

## Analysis of “Bath Salt” Compounds from Urine for Forensic Toxicology Using $\mu$ Elution Mixed-mode SPE Combined with UPLC/MS/MS Detection

Jonathan P. Danaceau, Erin E. Chambers, and Kenneth J. Fountain  
Waters Corporation, Milford, MA, USA

### APPLICATION BENEFITS

- Single method for comprehensive panel of synthetic cathinones
- Linear response for all analytes and metabolites
- Greater than 90% recovery for most analytes
- Matrix effects under 15% for all compounds
- Baseline resolution of structural isomers with identical mass spectra
- No evaporation or reconstitution steps needed for final SPE eluate

### WATERS SOLUTIONS

Oasis® MCX  $\mu$ Elution plates

96-Well Plate

ACQUITY UPLC® BEH Column

ACQUITY UPLC System

Xevo® TQD Mass Spectrometer

### KEY WORDS

Bath salts, cathinones, UPLC®, forensic toxicology, SPE

### INTRODUCTION

Synthetic cathinones, commonly marketed as “bath salts,” are variations of the chemical cathinone, naturally found in the Khat plant (*Catha edulis*). These drugs are central nervous system stimulants, mimicking the effects of drugs such as amphetamine, methamphetamine, cocaine, and methylphenidate. Often labeled as “not for human consumption,” their popularity and use have increased substantially in the last several years! In addition, new drugs with modifications to existing cathinone structures are constantly being developed and marketed in order to circumvent drug of abuse legislation aimed at specific compounds. This current application note details a strategy for the successful extraction and analysis of representatives of several different classes of synthetic cathinones from human urine samples for forensic toxicology. Using mixed-mode solid phase extraction (SPE) followed by UPLC/MS/MS analysis, a panel of 10 synthetic cathinones was extracted with excellent recovery and analytical sensitivity. Matrix effects were minimal for all compounds, and calibration curves were linear from one to 500 ng/mL. The analysis of several different classes of these drugs should render this method applicable to newly developed related compounds with minimal, if any, modification necessary.

## EXPERIMENTAL

## Method conditions

## LC conditions

System:	ACQUITY UPLC
Column:	ACQUITY UPLC BEH C <sub>18</sub> 1.7 µm, 2.1 x 100 mm (p/n 186002352)
Column temp.:	30 °C
Injection volume:	10 µL
Flow rate:	0.5 mL/min
Mobile phase A:	0.1% formic acid in MilliQ water
Mobile phase B:	0.1% formic acid in ACN
Gradient:	Initial hold at 20% B for 0.5 minute, increased to 30% over 2 minutes, then returned to 20% over 0.1 minute. The system was allowed to re-equilibrate for 1.4 minutes. The entire cycle time was 4.0 minutes.
Vials/plates:	96-well sample collection plates, 700 µL (p/n 186005837)

## MS conditions

Mass spectrometer:	Xevo TQD
Ionization mode:	ESI positive
Acquisition mode:	MRM (See Table 1 for transitions)
Capillary voltage:	1 kV
Collision energy (eV):	Optimized for individual compounds (See Table 1)
Cone voltage (V):	Optimized for individual compounds (See Table 1)

## Data management

All data was acquired and analyzed using Waters®  
MassLynx® Software

## Materials

4-methylmethcathinone (Mephedrone, 4-MMC), 3,4-methylenedioxy-N-methylcathinone (methytlone), and methylenedioxypyrovalerone (MDPV) were purchased from Cerilliant (Round Rock, TX). All other compounds and metabolites were purchased from Cayman Chemical (Ann Arbor, MI).

A combined stock solution of all compounds (5 µg/mL) was prepared in methanol. Working solutions were prepared daily by preparing standards in matrix (urine), and performing serial dilutions to achieve the desired concentrations. Calibrator concentrations ranged from five to 500 ng/mL for all analytes.

The 10 compounds analyzed, listed in Table 1, constitute a panel which includes forensically relevant cathinones such as pyrrolidiniophenones (α-PPP, α-PVP), methylenedioxycathinones (methytlone, ethylone), and methoxymethcathinones (methedrone). All are weak bases of moderate hydrophobicity that are well suited to extraction by mixed-mode ion exchange. Cone voltages, MRM transitions, and respective collision energies are listed for all compounds in Table 1.

## Sample preparation

Samples were extracted using mixed-mode, strong cation SPE. For each sample, 100 µL of urine was pre-treated by adding an equal volume of 4% H<sub>3</sub>PO<sub>4</sub>. Wells of the 96-well Oasis MCX µElution Plate (p/n 186001830BA) were conditioned with 200 µL MeOH, followed by 200 µL MilliQ water. 200 µL of each diluted sample was then added to each well, resulting in a sample load of 100 µL urine. After loading, the wells were washed with 200 µL of aqueous 2% formic acid, followed by 200 µL MeOH. All samples were then eluted with 2 x 50 µL of 60:40 ACN/IPA containing 5% by volume of a concentrated NH<sub>4</sub>OH solution (Fisher, 20% to 22%). Samples were then neutralized with 5 µL of concentrated formic acid, and diluted with 100 µL of water. 10 µL was injected onto the LC/MS/MS system.

Matrix effects were calculated according to the following equation:

$$\text{Matrix Effects} = \left( \left( \frac{\text{Peak area in the presence of matrix}}{\text{Peak area in the absence of matrix}} \right) - 1 \right) \times 100\%$$

## RESULTS AND DISCUSSION

### Chromatography

A representative chromatogram of all compounds from a 50-ng/mL calibration standard is shown in Figure 1. Peak assignments are listed in Table 1. Using an ACQUITY UPLC BEH C<sub>18</sub> 1.7  $\mu$ m, 2.1 x 100 mm Column, all analytes were analyzed within two minutes with a total cycle time of four minutes. Ethylone and butylone (peaks 2 and 6), an isobaric pair of compounds with identical precursor and product ions, demonstrate baseline resolution despite the short analysis time, enabling unambiguous identification that would not be possible if the two compounds co-eluted. Peak shape was excellent for all compounds, with no significant tailing or asymmetries, and all peak widths were under four seconds.

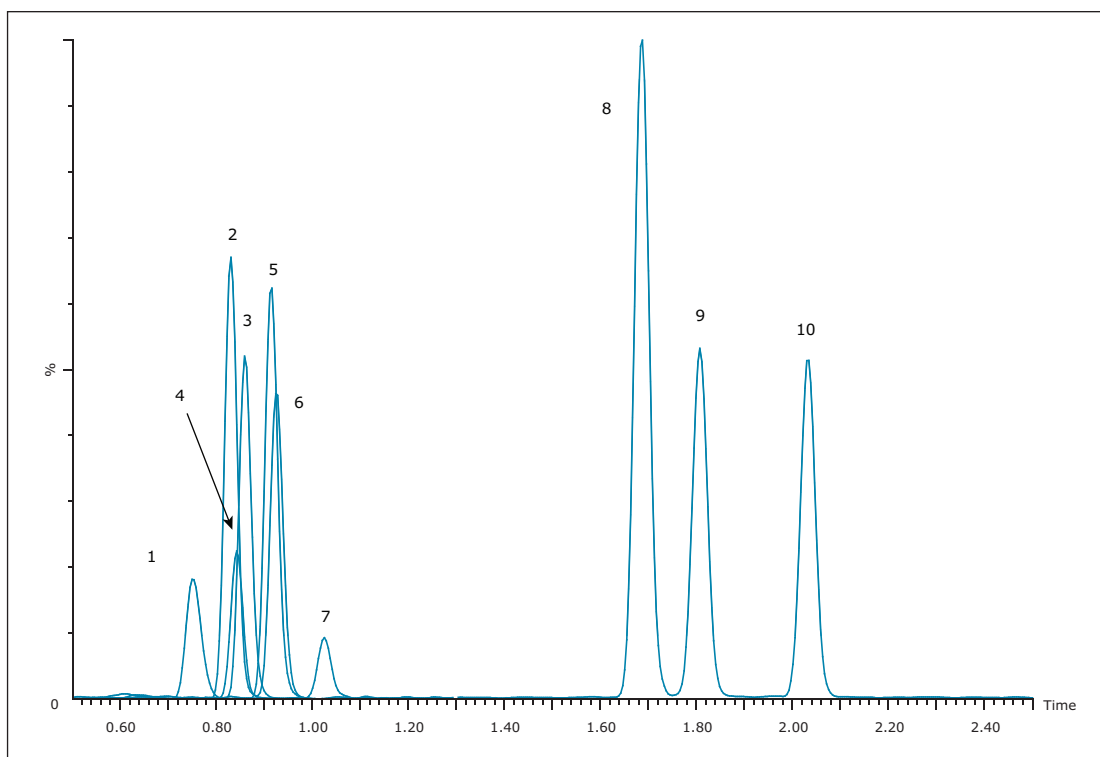


Figure 1. UPLC/MS/MS chromatogram for 10 “bath salt” compounds. Peak assignments are listed in Table 1.

	Drug	Alt name	RT	Formula	Mass	Cone voltage	MRM transitions	Coll. energy
1	Methylone	3,4-methylenedioxy-N-methylcathinone	0.75	C <sub>11</sub> H <sub>13</sub> NO <sub>3</sub>	207.23	28 28	208.2→132.0 208.2→160.0	28 18
2	Ethylone	MDEC, bk-MDEA	0.83	C <sub>12</sub> H <sub>15</sub> NO <sub>3</sub>	221.26	30 30	222.3→174.1 222.3→204.1	20 14
3	Methedrone	4-methoxymethcathinone	0.84	C <sub>11</sub> H <sub>15</sub> NO <sub>2</sub>	193.25	28 28	194.2→161.0 194.2→146.0	22 30
4	α-PPP	<i>alpha</i> -Pyrrolidinopropiophenone	0.86	C <sub>13</sub> H <sub>17</sub> NO	203.28	42 42	204.3→105.0 204.3→98.0	24 28
5	MDPPP	3',4'-Methylenedioxy-α-pyrrolidinopropiophenone	0.92	C <sub>14</sub> H <sub>17</sub> NO <sub>3</sub>	247.29	42 42	248.3→98.0 248.3→147.0	26 24
6	Butylone	Bk-MBDB	0.92	C <sub>12</sub> H <sub>15</sub> NO <sub>3</sub>	221.26	32 32	222.3→174.1 222.3→204.1	18 15
7	Mephedrone	4-methylmethcathinone, 4-MMC	1.02	C <sub>11</sub> H <sub>15</sub> NO	177.24	26 26	178.2→145.0 178.2→91.0	22 34
8	α-PVP	<i>alpha</i> -Pyrrolidinopentiophenone	1.66	C <sub>15</sub> H <sub>21</sub> NO	231.34	38 38	232.4→91.0 232.4→105.0	26 28
9	MDPV	Methylenedioxypyrovalerone	1.78	C <sub>16</sub> H <sub>21</sub> NO <sub>3</sub>	275.35	38 38	276.4→175.0 276.4→205.0	22 20
10	α-PVP Met 1	<i>alpha</i> -Pyrrolidinopentiophenone metabolite 1	2.00	C <sub>15</sub> H <sub>23</sub> NO	233.35	30 30	234.4→72.0 234.4→173.0	20 24

Table 1. MS/MS conditions and retention times for the cathinone compounds in this application.

## Recovery and matrix effects

For this application, elution from Oasis MCX  $\mu$ Elution plates was initially performed with a solution of 60:40 ACN/MeOH containing 5% concentrated  $\text{NH}_4\text{OH}$ . Recoveries were good for most compounds, averaging approximately 80%. However, the  $\alpha$ -PVP hydroxyl metabolite was recovered at only 40%. In addition, significant matrix effects, mostly in the form of ion suppression, were seen for many of the compounds tested, especially the three earliest eluting compounds, methylone, ethylone, and methedrone. Replacing the MeOH in the elution solvent with water did not reduce the matrix effects seen, and reduced the recovery of the  $\alpha$ -PVP hydroxyl metabolite to only 4%. However, when the MeOH was replaced with isopropanol (IPA), the recovery of the  $\alpha$ -PVP hydroxyl metabolite was increased to 87.4%, and the recoveries for the other nine analytes were improved from an average of 81% to nearly 98%. In addition, matrix effects were nearly eliminated for all compounds. Figure 2 summarizes the recoveries and matrix effects seen with the final extraction method. Recoveries range from 87.4% to 100.5% with matrix effects ranging from -3.6% to 12.4% at an average of 6.2%. This extraction protocol results in almost complete recovery, and minimizes matrix effects for the compounds tested.

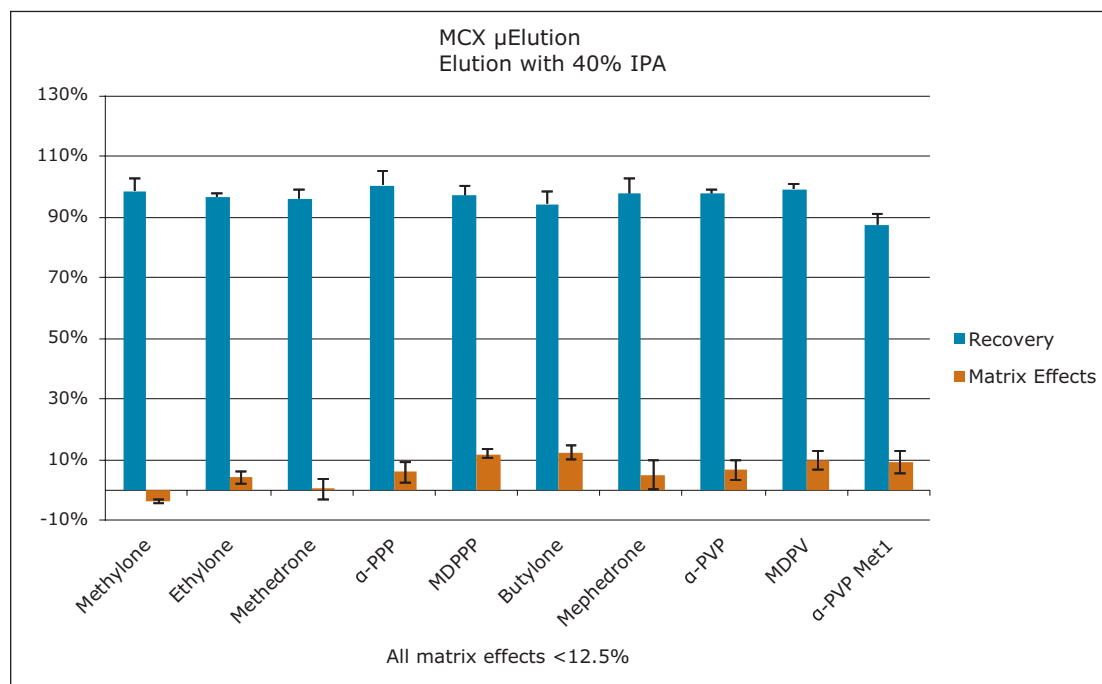


Figure 2. Recovery and matrix effects of “bath salt” compounds from urine following SPE using MCX  $\mu$ Elution plates. Bars and error bars represent mean and standard deviations ( $N=4$ ), respectively.

### Linearity and analytical sensitivity

In order to assess linearity and analytical sensitivity, calibration curves were extracted at concentrations ranging from 1 to 500 ng/mL for all components. Table 2 summarizes  $R^2$  values and average deviations ( $N=3$ ) from nominal values for all compounds. With the exception of the 10 ng/mL point for the  $\alpha$ -PVP metabolite, nearly all calibration points were within 15% of their target values. At the 1 ng/mL level, peak areas for all compounds were at least five-fold higher than that of blank, extracted urine samples, and all were within 5% of the nominal value.

	Concentration (ng/mL)						$R^2$
	1	5	10	50	100	500	
<b>Methylone</b>	-3.80	9.85	10.13	2.83	-7.43	-15.87	0.990
<b>Ethylone</b>	-2.60	8.13	10.43	2.20	-8.37	-9.80	0.990
<b>Methedrone</b>	-3.80	9.85	10.13	2.83	-7.43	-15.87	0.987
<b><math>\alpha</math>-PPP</b>	-1.37	4.33	5.67	-0.40	-6.80	-1.43	0.997
<b>MDPPP</b>	-1.70	7.33	3.30	-0.93	-6.53	-1.43	0.996
<b>Butylone</b>	-2.07	8.90	13.85	2.47	-6.13	-9.43	0.989
<b>Mephedrone</b>	-1.53	7.90	5.23	1.60	-6.33	-4.20	0.994
<b><math>\alpha</math>-PVP</b>	-1.70	4.60	8.20	-3.80	-9.27	0.80	0.994
<b>MDPV</b>	-1.20	3.60	3.20	-1.37	-9.23	2.33	0.997
<b><math>\alpha</math>-PVP Met1</b>	4.15	-9.60	-30.70	-4.97	9.47	11.07	0.983
All values indicate % deviation from nominal values							

Table 2. Accuracy of standard curve points and  $R^2$  values of calibration curves for “bath salt” compounds.

## CONCLUSIONS

A panel of 10 synthetic cathinone drugs were extracted from urine by mixed-mode SPE, and analyzed by UPLC/MS/MS. The use of Waters MCX  $\mu$ Elution plates resulted in excellent recoveries for all analytes while minimizing matrix effects. Furthermore, no evaporation or reconstitution steps were necessary, saving time and eliminating the risk of sample loss by evaporation or adsorption that can accompany such procedures. Separation by UPLC enabled the analysis of all compounds in two minutes with baseline resolution of a critical isobaric pair. Calibration curves were linear from one to 500 ng/mL with limits of quantitation of 1 ng/mL for all compounds. This method enables the rapid and reliable extraction and analysis of this critical class of compounds for forensic toxicology.

## Reference

1. Coppola M, Mondola R. Synthetic cathinones: Chemistry, pharmacology and toxicology of a new class of designer drugs of abuse marketed as "bath salts" or "plant food." *Toxicology Letters*. 2012; 211(2): 144-149.

# Waters

THE SCIENCE OF WHAT'S POSSIBLE.™



Waters, Oasis, ACQUITY UPLC, Xevo, ACQUITY, UPLC, and MassLynx are registered trademarks of Waters Corporation. The Science of What's Possible is a trademark of Waters Corporation. All other trademarks are the property of their respective owners.

©2013 Waters Corporation. Produced in the U.S.A.  
June 2013 720004708EN LL-PDF

**Waters Corporation**  
34 Maple Street  
Milford, MA 01757 U.S.A.  
T: 1 508 478 2000  
F: 1 508 872 1990  
[www.waters.com](http://www.waters.com)