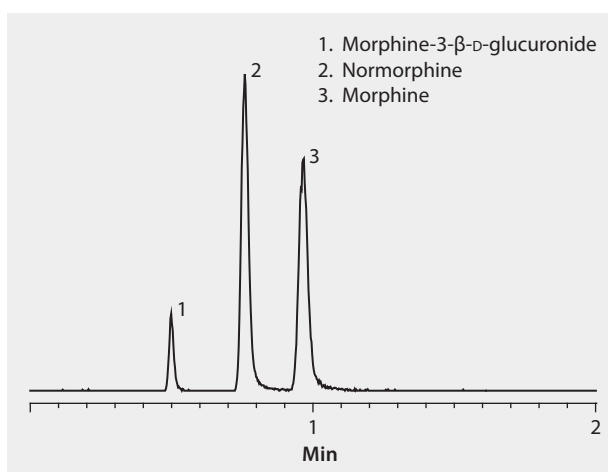


## UHPLC/MS Analysis of Morphine and Metabolites on Titan™ C18

This method shows morphine and its metabolites separated on a Titan C18 column and MS detection. Fluka LC-MS Ultra CHROMASOLV solvents were used to supply low background interference and low particulate contaminants for robust, trouble-free operation. Cerilliant CRMs provided reliable identification and quantification.

market focus	Clinical; Forensics and Toxicology
column	Titan C18, 5 cm x 2.1 mm I.D., 1.9 µm particles (577122-U)
mobile phase	[A] water with 0.1% formic acid; [B] acetonitrile with 0.1% formic acid ; (95:5, A:B)
flow rate	0.4 mL/min
pressure	4960 psi (342 bar)
column temp.	25 °C
detector	MS-TOF, XIC
injection	0.5 µL
sample	1 µg/mL in 99:1, water:methanol
Application No.	G006115



### Related Products

#### analytical column

Titan™ C18 UHPLC Column, 1.9 micron ([Supelco 577122-U](#))

#### mobile phase component

Acetonitrile ([Fluka 14261](#))

Formic acid ([Fluka 14265](#))

Water ([Fluka 14263](#))

#### standard

Morphine solution ([Cerilliant M-005](#))

Morphine-3-β-D-glucuronide solution ([Cerilliant M-031](#))

Normorphine solution ([Cerilliant N-006](#))